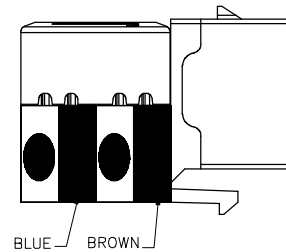
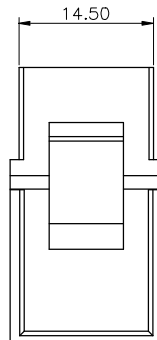
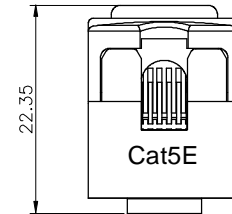
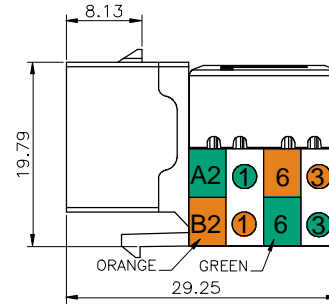
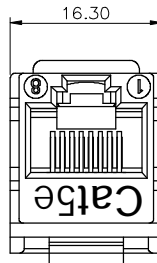


RoHS

THIS IS A RoHS COMPLIANT COMPONENT/PRODUCT.



NOTES:

ELECTRICAL:

- 1. VOLTAGE RATING : 125 VAC.
- 2. CURRENT RATING : 1.5 AMP.
- 3. CONTACT RESISTANCE : 100 MILLIOHMS MAX.
- 4. INSULATION RESISTANCE : 1000 MEGOHMS MIN. @ 500 VDC.
- 5. DIELECTRIC STRENGTH : 750 VAC 60Hz, 1MIN.

MECHANICAL:

- 1. HOUSING MATERIAL : PC UL94V-0.
- 2. INSERT MATERIAL : PBT+30% GF. UL94V-0.
- 3. PCB MATERIAL : FR-4 THICKNESS 1.6 mm.
- 4. CONTACT MATERIAL : PHOSPHOR BRONZE STAMP PIN t=0.35 mm
- 5. IDC CONTACT MATERIAL : PHOSPHOR BRONZE t=0.50 mm WITH NICKEL PLATING
- 6. WIRE : #24~26 AWG

ENVIRONMENTAL:

- 1. STORAGE : -40°C TO +85°C.
- 2. OPERATION : 0°C TO 70°C.

MARK	ECN-NO.	REVISION RECORD	SCALE	CHECKED
	000000	NEW DESIG	1/1	HENRY
				121014'
Material/Plated/Notes		NAME	UNIT	APPROVED
SEE NOTE		Cat.5e SIDE ENTRY KEYSTONE JACK	mm	
Tooling No.		PART NO.	SIZE	SHEET
		326I-0008-05	A3	1/1
		DOC. NO.		REV.
				1