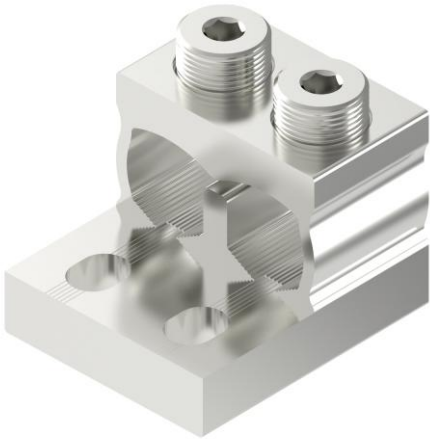


Product data

Product code	VC02-0149	STK-code	1914397	EAN-code	6430051863042
Product name	OT Universal connector 2xAl/Cu 95-300mm <sup>2</sup>			ETIM class	EC000897
Wires	2xAl/Cu 95-300 mm <sup>2</sup>				

Technical data

Nominal current (IEC)	Cu	980	A
	Al	630	A
Nominal voltage (IEC)		690	V
		-	
		-	
		-	
Number of poles		1	pcs
Max. Cross section		300	mm <sup>2</sup>
Tightening torque			
	95-150 mm <sup>2</sup>	30	Nm
	185-300 mm <sup>2</sup>	60	Nm
		-	
		-	
		-	
Operating temperature		-20..+80	°C
Weight		325	g
		-	

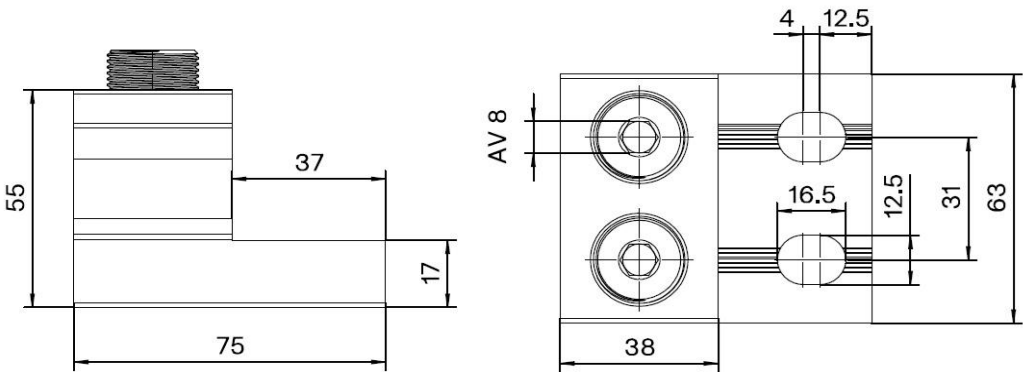


Standards	EN 61238-1; EN60947-7-1
Color / Material	Tin plated aluminium
Mounting / Connection	Screw 2xM22

Description

Ouneva OT-connectors are a universal terminal series for connecting Al- and Cu-conductors to equipment. OT-connectors are used in equipment or as a transfer terminal between copper and aluminium. Connectors are made of tin plated aluminium. The connectors are manufactured in Finland.

Drawing



Package

Package	Box	Pcs / Package	6	Weight [kg]	2,05
Length [mm]	210	Width [mm]	160	Height [mm]	105