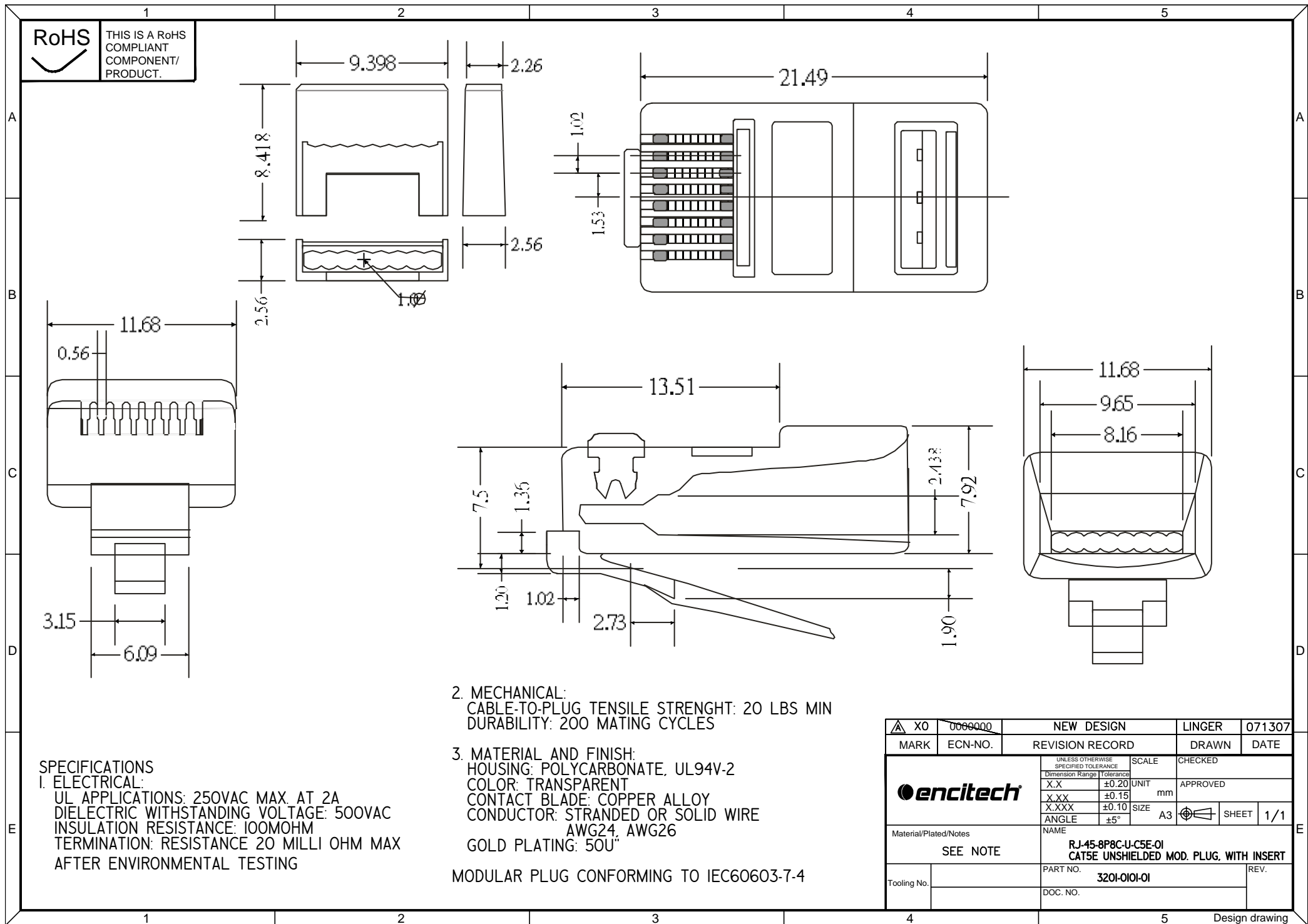




THIS IS A RoHS COMPLIANT COMPONENT/PRODUCT.



2. MECHANICAL:
 CABLE-TO-PLUG TENSILE STRENGTH: 20 LBS MIN
 DURABILITY: 200 MATING CYCLES
3. MATERIAL AND FINISH:
 HOUSING: POLYCARBONATE, UL94V-2
 COLOR: TRANSPARENT
 CONTACT BLADE: COPPER ALLOY
 CONDUCTOR: STRANDED OR SOLID WIRE
 AWG24, AWG26
 GOLD PLATING: 50U"
- MODULAR PLUG CONFORMING TO IEC60603-7-4

SPECIFICATIONS

1. ELECTRICAL:
 UL APPLICATIONS: 250VAC MAX. AT 2A
 DIELECTRIC WITHSTANDING VOLTAGE: 500VAC
 INSULATION RESISTANCE: 100MOHM
 TERMINATION: RESISTANCE 20 MILLI OHM MAX
 AFTER ENVIRONMENTAL TESTING

MARK	X0	0009000	NEW DESIGN	LINGER	071307	
MARK	ECN-NO.	REVISION RECORD	DRAWN	DATE		
		UNLESS OTHERWISE SPECIFIED TOLERANCE	SCALE	CHECKED		
		Dimension Range Tolerance		APPROVED		
		X.X	±0.20	UNIT	mm	
		X.XX	±0.15	SIZE	A3	
X.XXX	±0.10	ANGLE	±5°			
Material/Plated/Notes		NAME				
SEE NOTE		RJ-45-8P8C-U-C5E-01 CAT5E UNSHIELDED MOD. PLUG. WITH INSERT				
Tooling No.		PART NO.		REV.		
		3201-0101-01				
		DOC. NO.				