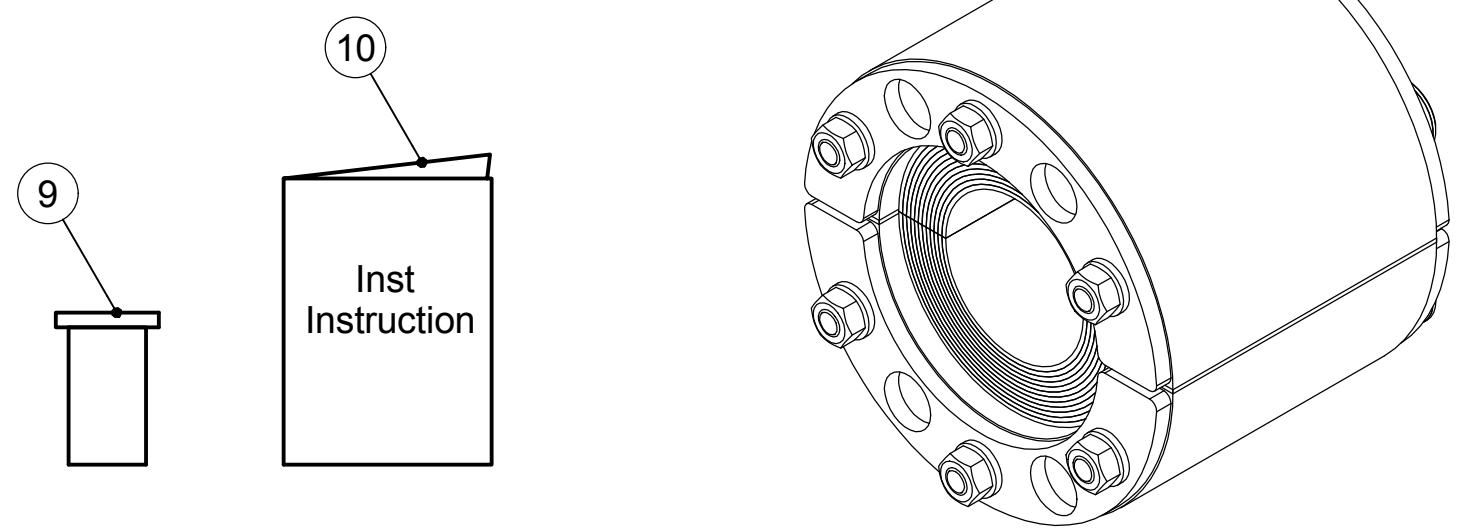
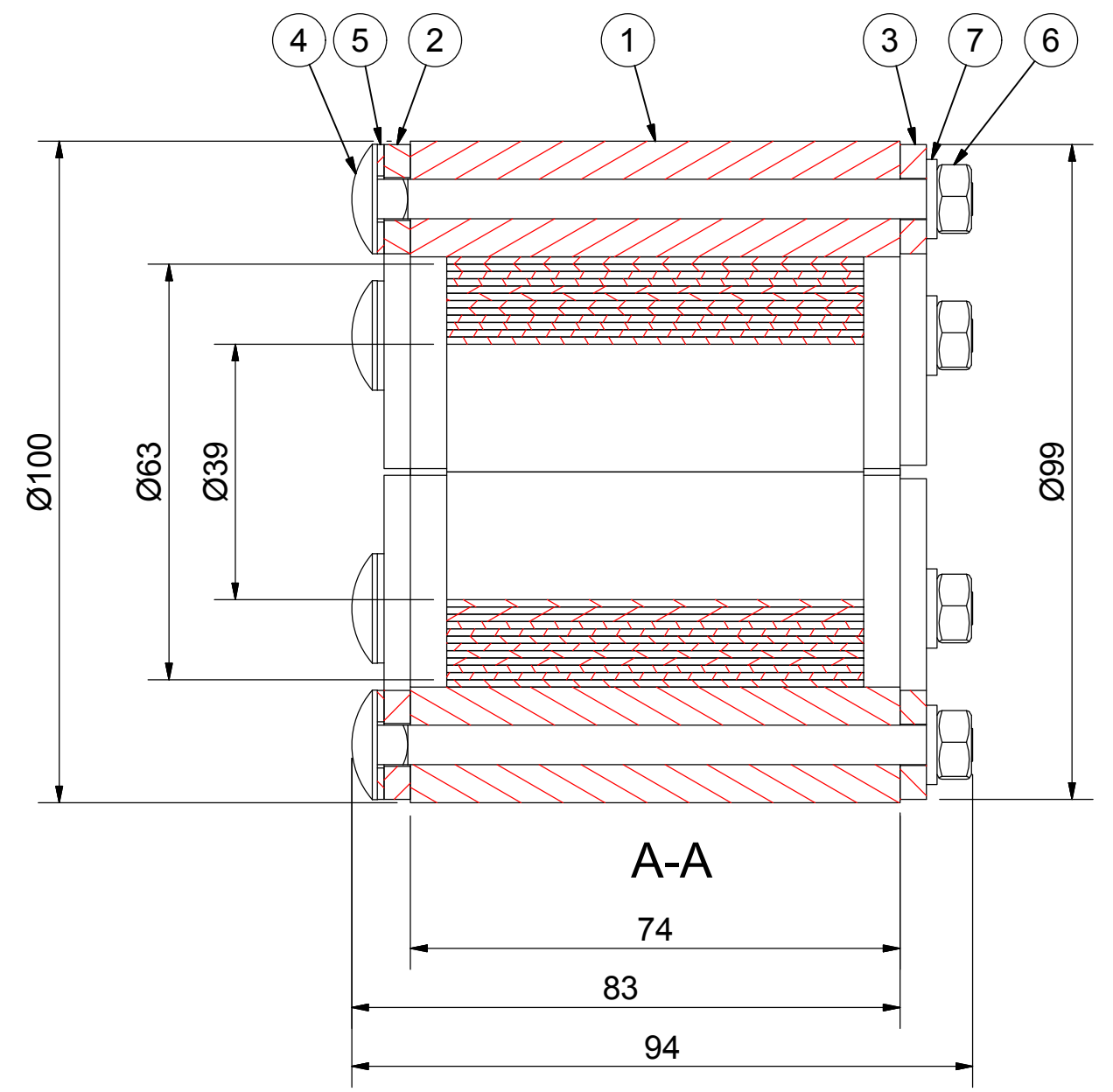
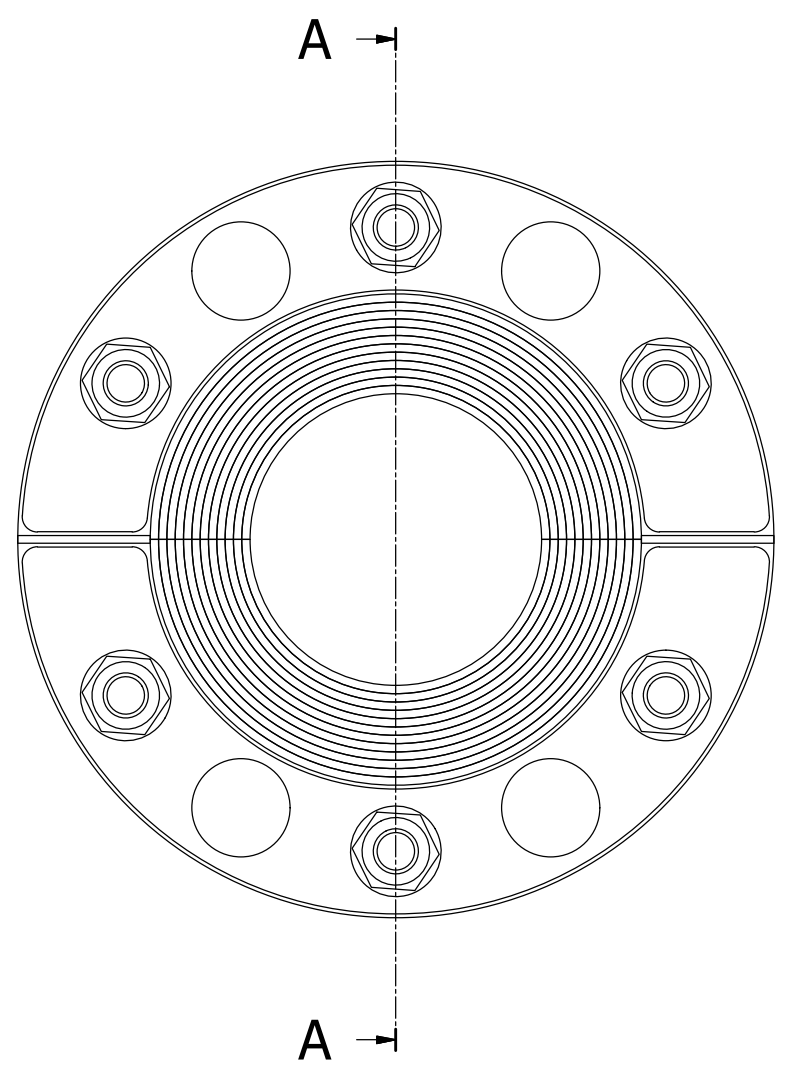


洛克赛克保留所有权利。未经授权严禁复制，使用以及向第三方泄露。

All rights reserved. Unauthorized reproduction, use or disclosure to third parties is strictly forbidden.



ITEM	QTY	Designation	Specification	Weight
10	1	INSTALLATION INSTRUCTION		
9	1	LUBRICANT	10 ml	
7	6	WASHER	ISO 7089 M6 A4	
6	6	NUT	ISO 4032 M6 A4	
5	6	GASKET MVBF	M6, EPDM T=1	
4	6	SCREW	MVBF M6x90 DIN 603 A4	
3	2	FRONT FITTING	AISI 316, T=4 mm	
2	2	REAR FITTING	AISI 316, T=4 mm	
1	2	RUBBER FRAME	HE-EPDM	

General tolerance:		Welded details:		General surface roughness:		Designed by/date		Latest save date		Format		Scale		Sheet no		TotWeight	
ISO 2768-1/2-m/K		EN ISO 5817-B		Ra 12.5		se-ronpet 2016-04-18		2016-04-18		A3				1 / 1		0,8 kg	
EN ISO 13920-BF		EN ISO 10042-B				Title										Projection method	
						RS UG SEALING										⊕	
						RS 100 UG INSERTABLE WOC										Rev	
						Restricted due to				Drawing number						A	
						www.roxtec.com		Information drawing				S1511757					

Rev	Type of revision	Date	Sign
A		2016-04-18	se-ronpet